

Fox Lane Quieter Neighbourhood

Healthy Street Review Summary

January 2022

London
57 Webber Street
London, SE1 0RF

london@nrpltd.com
+44 (0)207 654 7280

Bristol
NRP, 4 Colston Avenue,
Bristol, BS1 4ST

bristol@nrpltd.com
+44 (0)117 387 8910

www.nrpltd.com

Introduction

TfL have developed a spreadsheet tool to support designers to ensure that a proposed scheme delivers improvements. The spreadsheet tool is called the 'Healthy Streets check for designers'. The tool is based on TfL's Healthy Streets Approach, which was the framework used to develop the Mayor's Transport Strategy.

The Healthy Street Approach is based on 10 Healthy Streets Indicators which focus on the experience of people using streets, with an overarching aim to improve air quality, reduce congestion and help make London's diverse communities greener, healthier and more attractive places to live, work, play and do business.

The Check holds no formal status in guidance and decision making but advises designers and decision makers on the alignment of a project with the Healthy Streets Approach.

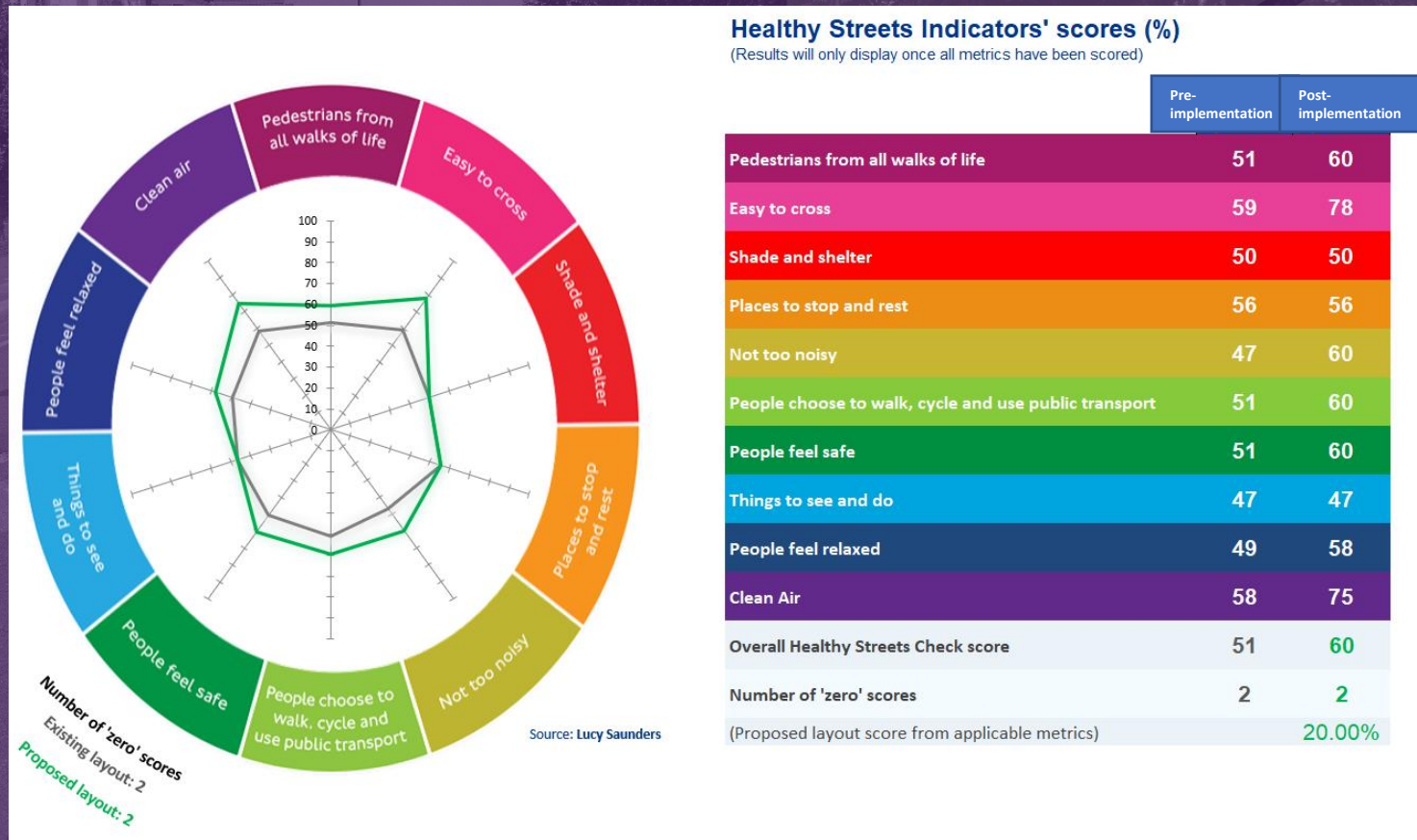
For the Fox Lane Quieter Neighbourhood scheme, a selection of both internal and external roads have been assessed against the tool, with a summary provided on the following slides. The roads that have been assessed are as follows:

- Fox Lane – Internal road
- Amberley Road – Internal road
- Meadway – Internal road
- High Street – External road
- The Bourne – External road
- Green Lanes – External road
- Winchmore Hill Road – External road

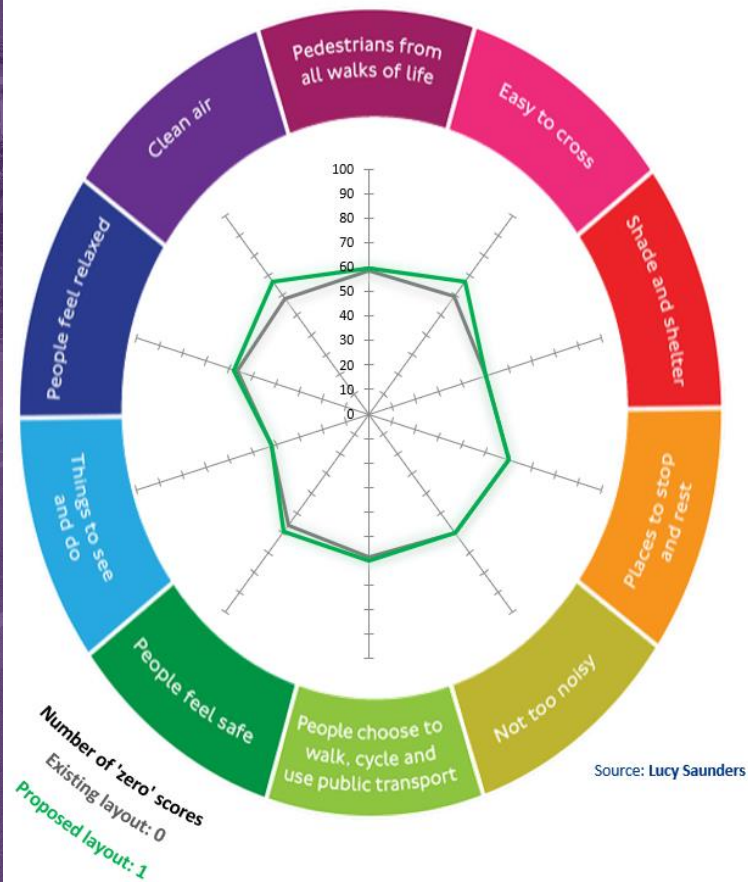
Traffic surveys before and after the scheme was implemented, recording traffic volumes and speeds, have been used to assess the scheme, along with a qualitative and quantitative assessment of the characteristics of the roads, such as cycle and pedestrian provision and the amount of greening and seating. Further details on the traffic data used can be found in the separate report 'Fox Lane Quieter Neighbourhood – Post-Scheme Monitoring'.

Fox Lane – Healthy Streets Score

The graphic below shows the scores for Fox Lane before the scheme went in (Pre-implementation) against the layout following implementation (Post-implementation).



Amberley Road – Healthy Streets Score

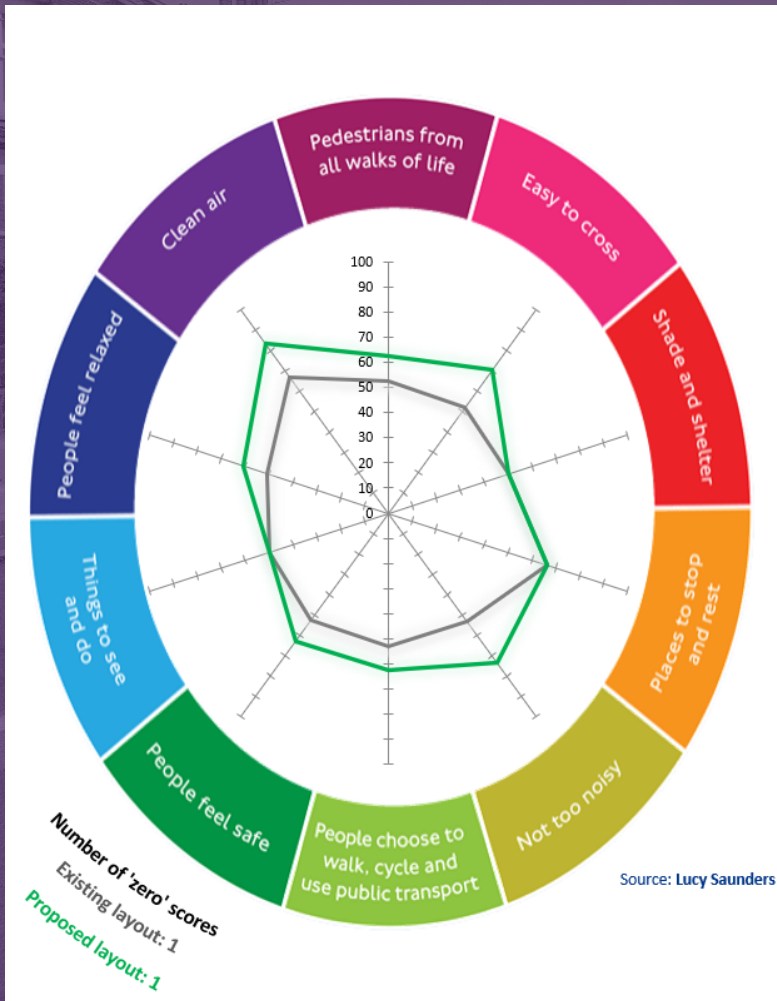
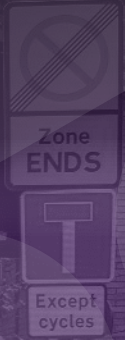


Healthy Streets Indicators' scores (%)

(Results will only display once all metrics have been scored)

	Pre-implementation	Post-implementation
Pedestrians from all walks of life	58	60
Easy to cross	59	67
Shade and shelter	50	50
Places to stop and rest	60	60
Not too noisy	60	60
People choose to walk, cycle and use public transport	58	60
People feel safe	56	60
Things to see and do	42	42
People feel relaxed	57	58
Clean Air	58	67
Overall Healthy Streets Check score	57	59
Number of 'zero' scores	0	1
(Proposed layout score from applicable metrics)		3.57%

Meadway- Healthy Streets Score

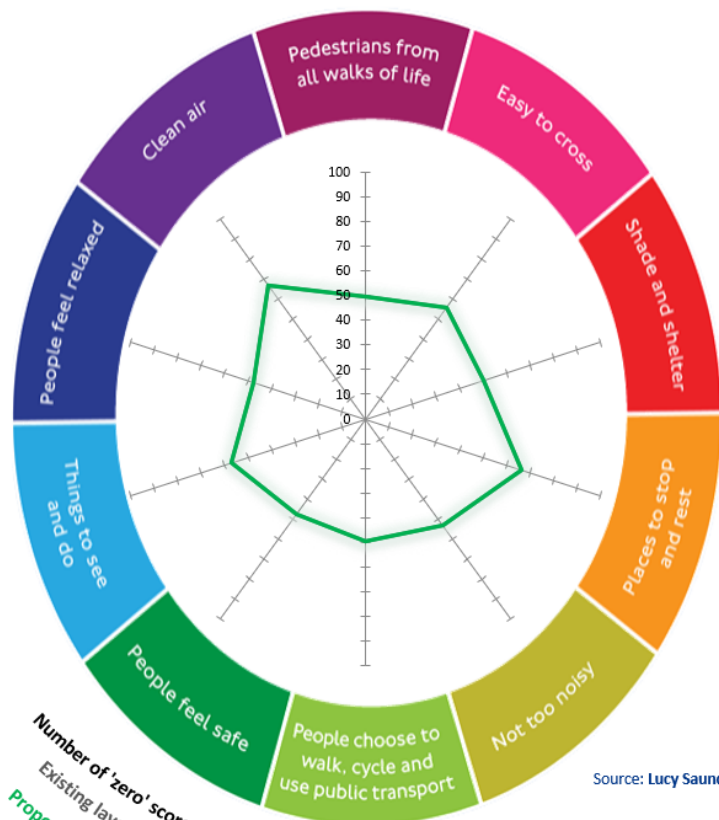


Healthy Streets Indicators' scores (%)

(Results will only display once all metrics have been scored)

	Pre-implementation	Post-implementation
Pedestrians from all walks of life	53	63
Easy to cross	52	70
Shade and shelter	50	50
Places to stop and rest	67	67
Not too noisy	53	73
People choose to walk, cycle and use public transport	53	63
People feel safe	53	63
Things to see and do	50	50
People feel relaxed	51	61
Clean Air	67	83
Overall Healthy Streets Check score	53	64
Number of 'zero' scores	1	1
(Proposed layout score from applicable metrics)		22.58%

High Street – Healthy Streets Score



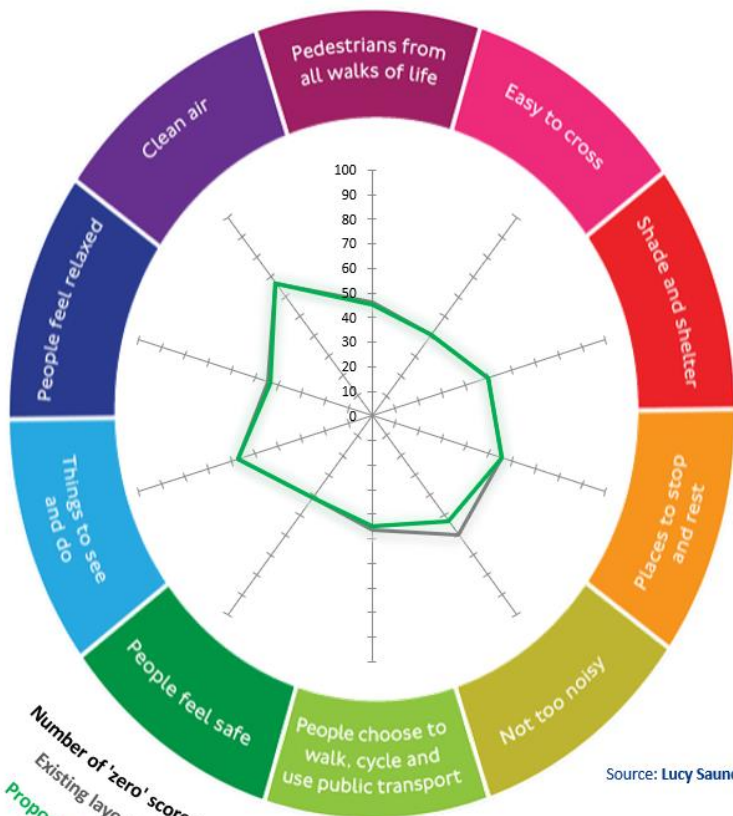
Source: Lucy Saunders

Healthy Streets Indicators' scores (%)

(Results will only display once all metrics have been scored)

	Pre-implementation	Post-implementation
Pedestrians from all walks of life	49	49
Easy to cross	56	56
Shade and shelter	50	50
Places to stop and rest	67	67
Not too noisy	53	53
People choose to walk, cycle and use public transport	49	49
People feel safe	48	48
Things to see and do	57	57
People feel relaxed	48	48
Clean Air	67	67
Overall Healthy Streets Check score	51	51
Number of 'zero' scores	4	4
(Proposed layout score from applicable metrics)		0.00%

The Bourne – Healthy Streets Score



Number of 'zero' scores
Existing layout: 3
Proposed layout: 3

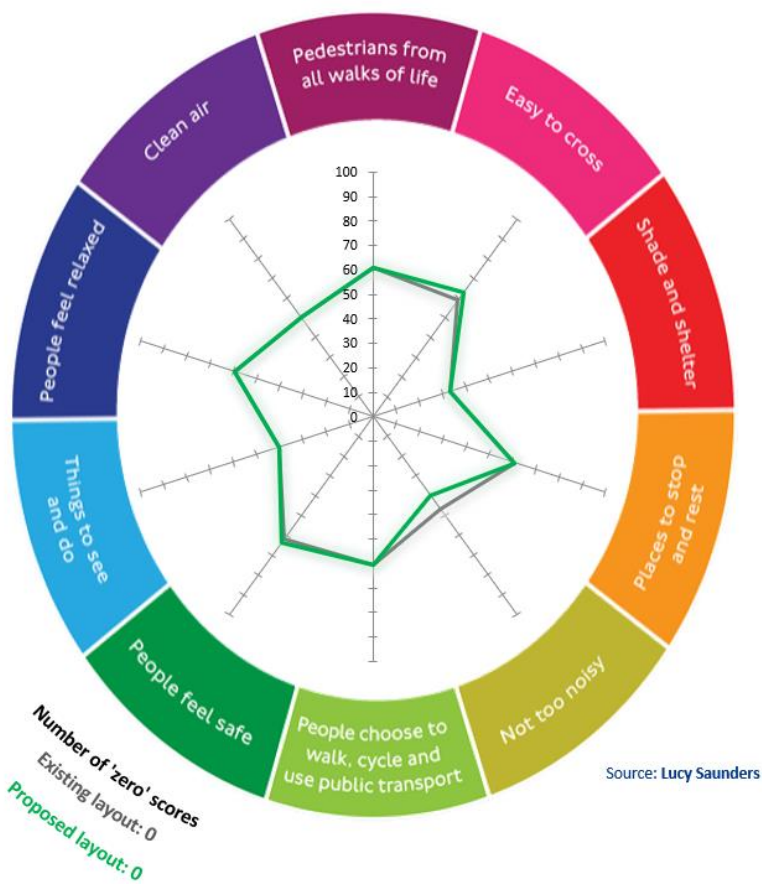
Healthy Streets Indicators' scores (%)

(Results will only display once all metrics have been scored)

	Pre-implementation	Post-implementation
Pedestrians from all walks of life	46	45
Easy to cross	41	41
Shade and shelter	50	50
Places to stop and rest	56	56
Not too noisy	60	53
People choose to walk, cycle and use public transport	46	45
People feel safe	41	41
Things to see and do	57	57
People feel relaxed	44	43
Clean Air	67	67
Overall Healthy Streets Check score	47	46
Number of 'zero' scores	3	3
(Proposed layout score from applicable metrics)		-2.44%



Green Lanes – Healthy Streets Score



Number of 'zero' scores
Existing layout: 0
Proposed layout: 0

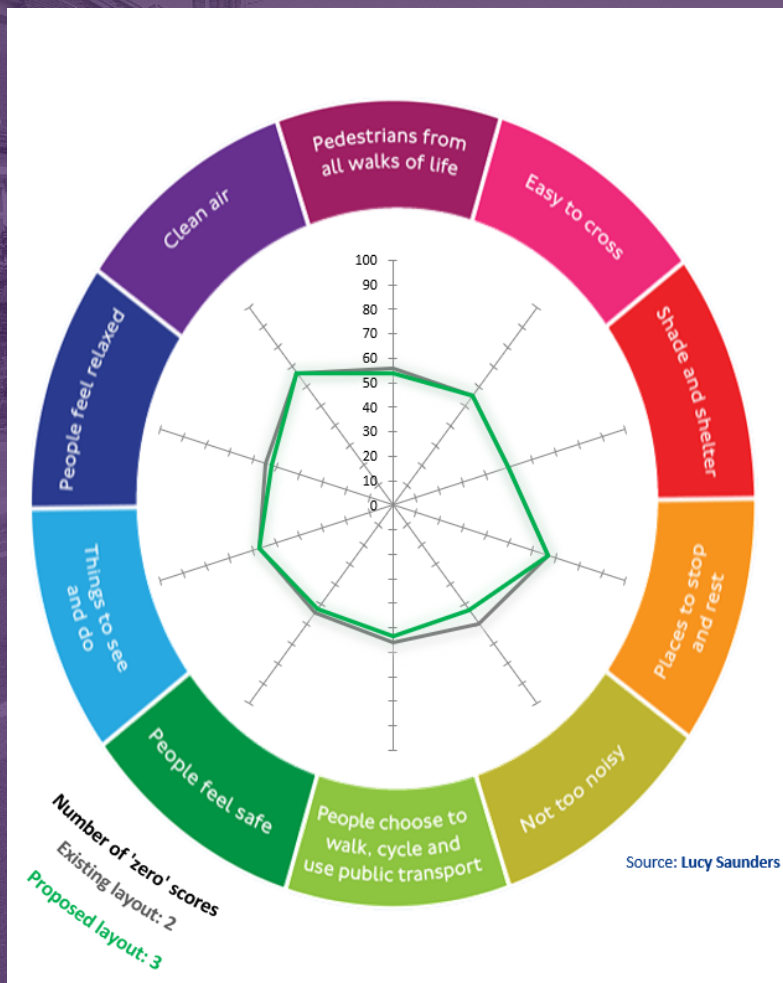
Healthy Streets Indicators' scores (%)

(Results will only display once all metrics have been scored)

	Pre-implementation	Post-implementation
Pedestrians from all walks of life	61	61
Easy to cross	59	63
Shade and shelter	33	33
Places to stop and rest	61	61
Not too noisy	47	40
People choose to walk, cycle and use public transport	61	61
People feel safe	62	63
Things to see and do	40	40
People feel relaxed	59	59
Clean Air	50	50
Overall Healthy Streets Check score	59	59
Number of 'zero' scores	0	0
(Proposed layout score from applicable metrics)		0.00%



Winchmore Hill Road – Healthy Streets Score



Healthy Streets Indicators' scores (%)

(Results will only display once all metrics have been scored)

	Pre-implementation	Post-implementation
Pedestrians from all walks of life	56	54
Easy to cross	56	56
Shade and shelter	50	50
Places to stop and rest	67	67
Not too noisy	60	53
People choose to walk, cycle and use public transport	56	54
People feel safe	54	52
Things to see and do	57	57
People feel relaxed	54	52
Clean Air	67	67
Overall Healthy Streets Check score	56	54
Number of 'zero' scores	2	3
(Proposed layout score from applicable metrics)		-6.06%



Overall Healthy Streets Check Summary

Location	Pre-implementation Score	Post-Implementation Score	% change
Fox Lane	51	60	20.0%
Amberley Road	57	59	3.6%
Meadway	53	64	22.6%
High Street	51	51	0.0%
The Bourne	47	46	-2.4%
Green Lanes	59	59	0.0%
Winchmore Hill Road	56	54	-6.1%

The results of the Healthy Streets Check show that the internal roads see an estimated improvement of 3.6-22.6% based on the Healthy Streets scoring tool.

On the boundary roads, High Street and Green Lanes retain the same score, with The Bourne seeing an estimated reduction of -2.4%. On Winchmore Hill the reduction is estimated to be -6.1%.